

**ATP2B3 Antibody (C-term)**  
**Purified Rabbit Polyclonal Antibody (Pab)**  
**Catalog # AP21234b****Specification**

---

**ATP2B3 Antibody (C-term) - Product Information**

Application	WB, IF, E
Primary Accession	<a href="#">Q16720</a>
Reactivity	Human
Host	Rabbit
Clonality	polyclonal
Isotype	Rabbit IgG
Calculated MW	134197

**ATP2B3 Antibody (C-term) - Additional Information****Gene ID** 492**Target/Specificity**

This ATP2B3 antibody is generated from a rabbit immunized with a KLH conjugated synthetic peptide between 1161-1194 amino acids from the C-terminal region of human ATP2B3.

**Dilution**

WB~~1:2000

IF~~1:25

E~~Use at an assay dependent concentration.

**Format**

Purified polyclonal antibody supplied in PBS with 0.09% (W/V) sodium azide. This antibody is purified through a protein A column, followed by peptide affinity purification.

**Storage**

Maintain refrigerated at 2-8°C for up to 2 weeks. For long term storage store at -20°C in small aliquots to prevent freeze-thaw cycles.

**Precautions**

ATP2B3 Antibody (C-term) is for research use only and not for use in diagnostic or therapeutic procedures.

**ATP2B3 Antibody (C-term) - Protein Information****Name** ATP2B3 {ECO:0000303|PubMed:8187550, ECO:0000312|HGNC:HGNC:816}

**Function** ATP-driven Ca(2+) ion pump involved in the maintenance of basal intracellular Ca(2+) levels at the presynaptic terminals (PubMed:[18029012](#), PubMed:[22912398](#), PubMed:[25953895](#), PubMed:[27035656](#)). Uses ATP as an energy source to transport cytosolic Ca(2+) ions across the plasma membrane to the extracellular compartment (PubMed:[25953895](#), PubMed:[27035656](#)). May counter-transport protons, but the mechanism and the stoichiometry of this Ca(2+)/H(+) is unknown.

exchange remains to be established (By similarity).

#### **Cellular Location**

Cell membrane; Multi-pass membrane protein. Presynaptic cell membrane {ECO:0000250|UniProtKB:Q64568}; Multi-pass membrane protein. Note=Localized at parallel fiber terminals {ECO:0000250|UniProtKB:Q64568}

#### **Tissue Location**

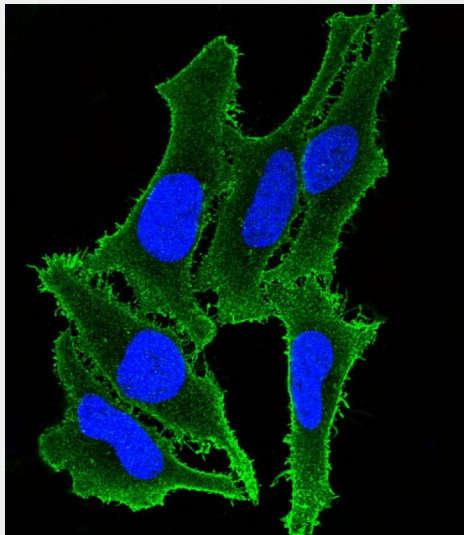
Highly expressed in the cerebellum (PubMed:8187550). Expressed in adrenal glands (PubMed:27035656)

### **ATP2B3 Antibody (C-term) - Protocols**

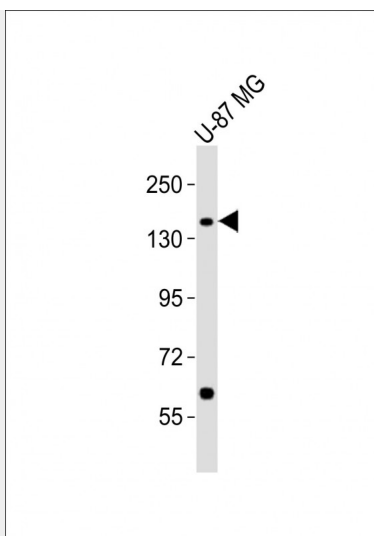
Provided below are standard protocols that you may find useful for product applications.

- [Western Blot](#)
- [Blocking Peptides](#)
- [Dot Blot](#)
- [Immunohistochemistry](#)
- [Immunofluorescence](#)
- [Immunoprecipitation](#)
- [Flow Cytometry](#)
- [Cell Culture](#)

### **ATP2B3 Antibody (C-term) - Images**



Immunofluorescent analysis of 4% paraformaldehyde-fixed, 0.1% Triton X-100 permeabilized HeLa (Human Cervical epithelial adenocarcinoma cell line) cells labeling ATP2B3 with AP21234b at 1/25 dilution, followed by Dylight® 488-conjugated goat anti-rabbit IgG (NK179883) secondary antibody at 1/200 dilution (green). Immunofluorescence image showing membrane staining on HeLa cell line. The nuclear counter stain is DAPI (blue).



Anti-ATP2B3 Antibody (C-term) at 1:2000 dilution + U-87 MG whole cell lysates. Lysates/proteins at 20 µg per lane. Secondary Goat Anti-Rabbit IgG, (H+L), Peroxidase conjugated at 1/10000 dilution. Predicted band size : 134 kDa. Blocking/Dilution buffer: 5% NFDM/TBST.